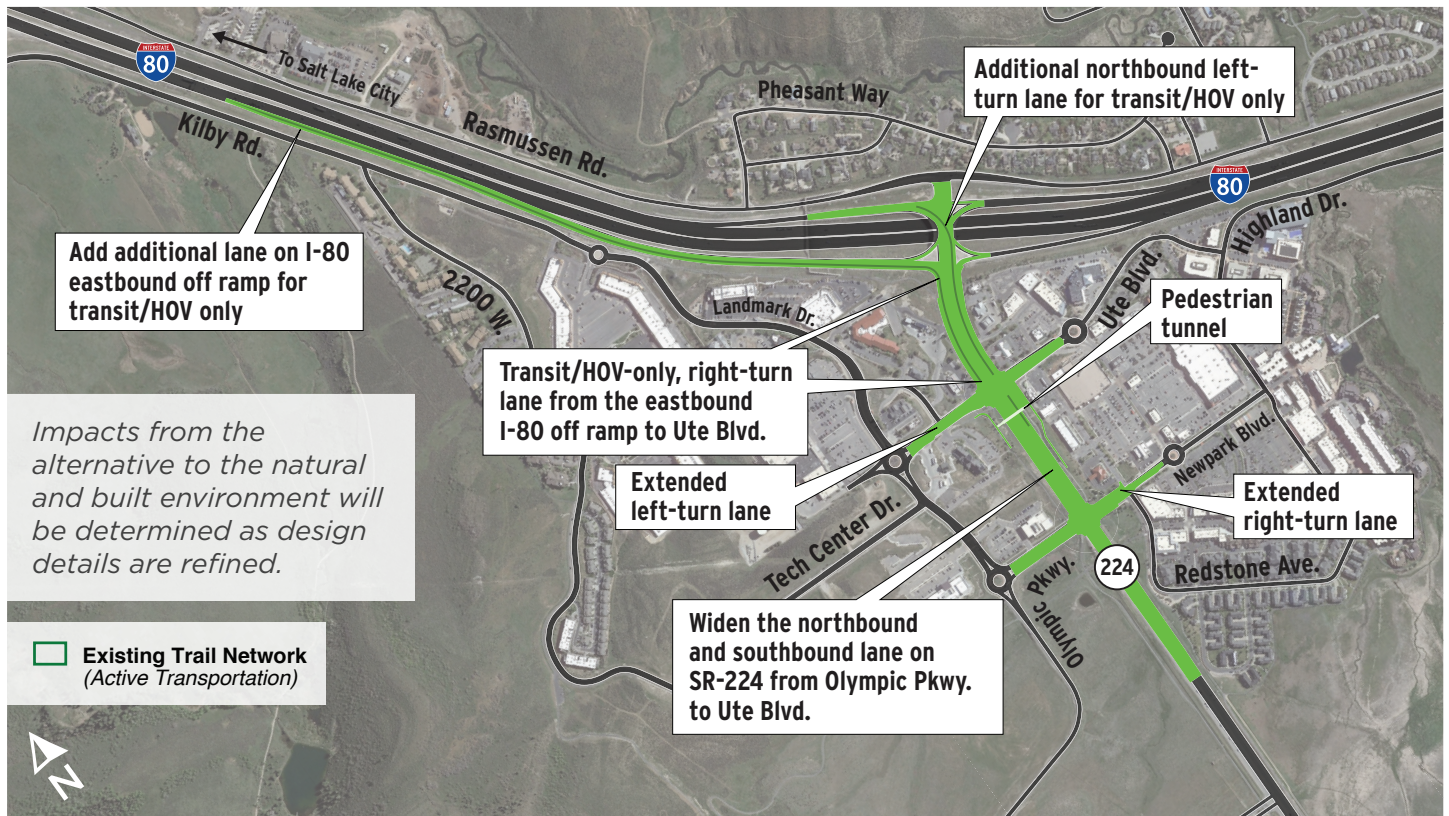


# ALTERNATIVE C

INTERSECTION IMPROVEMENTS WITH PEDESTRIAN ENHANCEMENTS



## DESCRIPTION

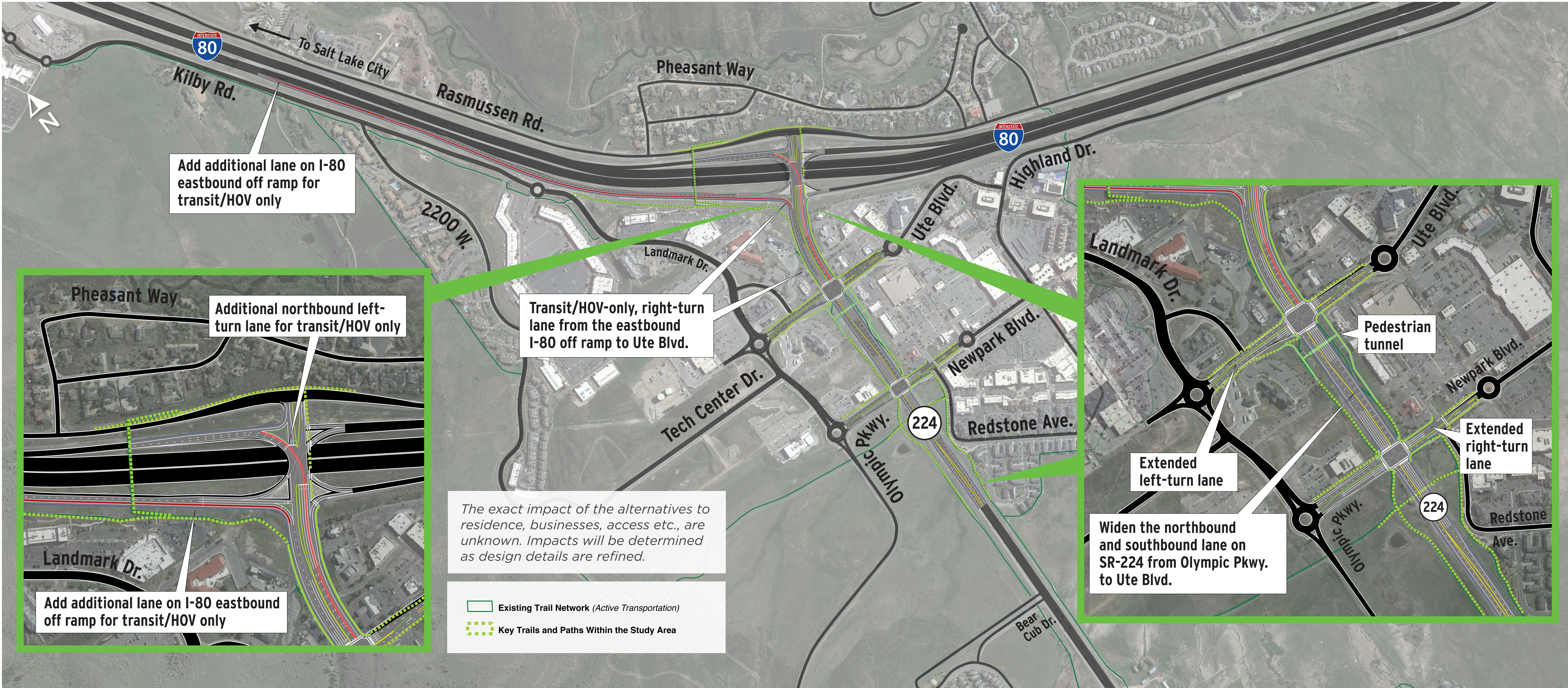
This alternative consists of expanding lanes for general purpose vehicles and strategic locations only for high-occupancy vehicles (HOV) while improving pedestrian and bicycle accessibility.

Potential improvements include the following options:

- Expand the I-80 eastbound off ramp for transit/HOV only. Add a transit/HOV-only, right-turn lane from the eastbound I-80 off ramp to Ute Boulevard
- Add dual left turn lanes at Olympic Parkway for southbound to eastbound movement
- Add an additional northbound left-turn lane at the existing single-point urban interchange (SPUI) for transit/HOV only
- Build a pedestrian tunnel near Ute Boulevard
- Widen the northbound and southbound lanes on SR-224 from Olympic Parkway to Ute Boulevard. A variation would be to widen only for an HOV-only lane
- Extend the westbound-to-northbound right-turn lane on Newpark Boulevard
- Extend the eastbound-to-northbound dual left-turn lane on Ute Boulevard

## BENEFITS

- ✓ Pedestrian tunnel would increase connectivity and comfort
- ✓ Improves travel time and mobility
- ✓ People would be incentivized to have additional occupants in vehicle
- ✓ Minimize queuing onto I-80



# ALTERNATIVE C: INTERSECTION IMPROVEMENTS WITH PEDESTRIAN ENHANCEMENTS