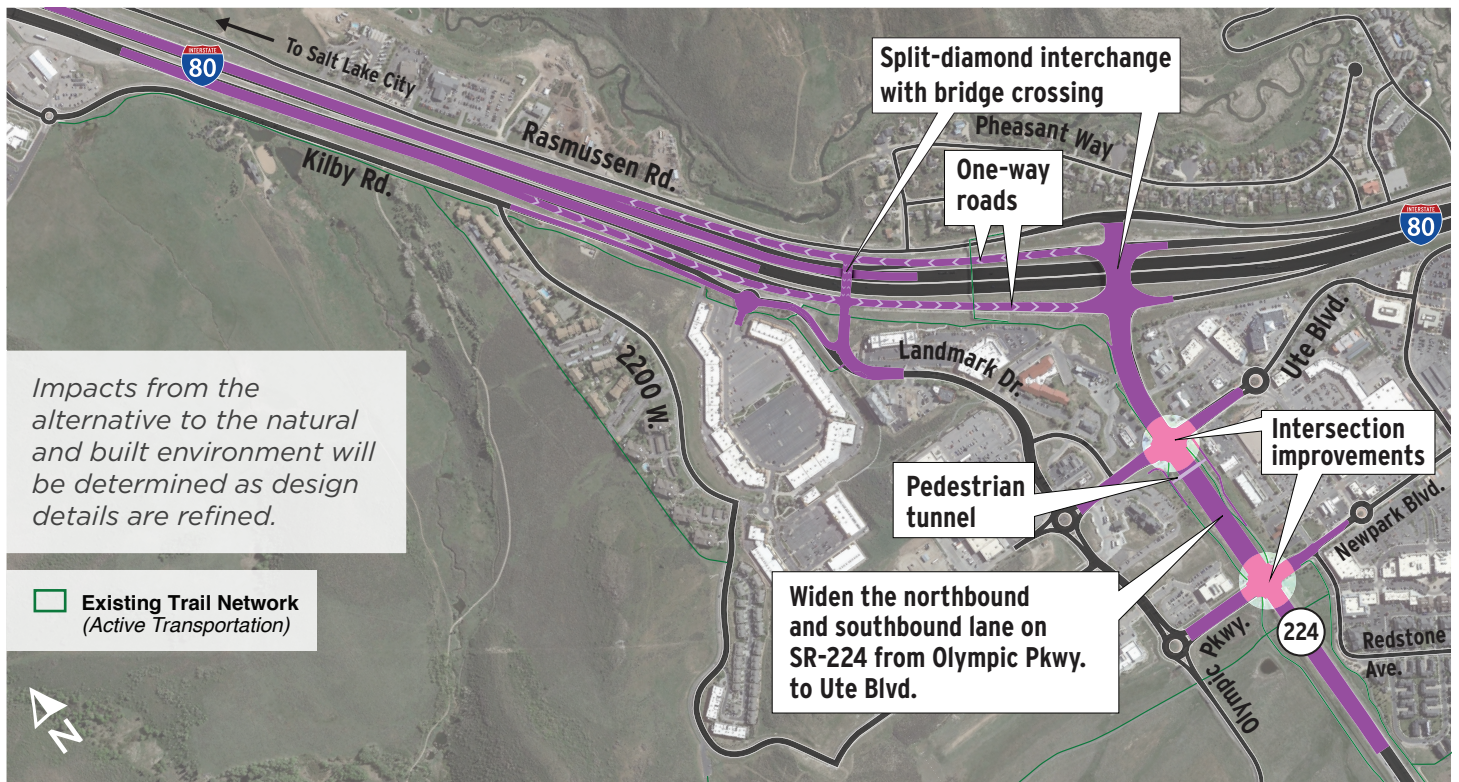


ALTERNATIVE A

SPLIT-DIAMOND INTERCHANGE WITH INTERSECTION IMPROVEMENTS



DESCRIPTION

This alternative consists of a split-diamond interchange configuration on I-80 with intersection and pedestrian improvements on SR-224. The existing single-point urban interchange (SPUI) at Kimball Junction would be converted into a tight-diamond configuration (traffic signals at each off ramp), and the interchange would be split between the existing location at SR-224 and a new intersection with a bridge crossing I-80 to the west of SR-224.

The split-diamond interchange would disperse traffic away from SR-224 by providing easier access to residential and commercial locations in west Kimball Junction. One-way roads for both eastbound and westbound directions would connect the two intersections and tie into the on and off ramps for I-80. The shared use path on the south side of I-80 would continue in the future for pedestrian comfort.

A pedestrian tunnel at Ute Boulevard and intersection improvements along SR-224 are proposed to move all users more efficiently through the area. Intersection improvements include adding northbound and southbound through lanes on SR-224 between Olympic Parkway and I-80.

BENEFITS

- ✓ Provides new access points, better traffic dispersion and direct access into Kimball Junction on the south side of I-80
- ✓ Pedestrian tunnel would increase connectivity and comfort
- ✓ Improves travel time and mobility
- ✓ Minimize queuing onto I-80