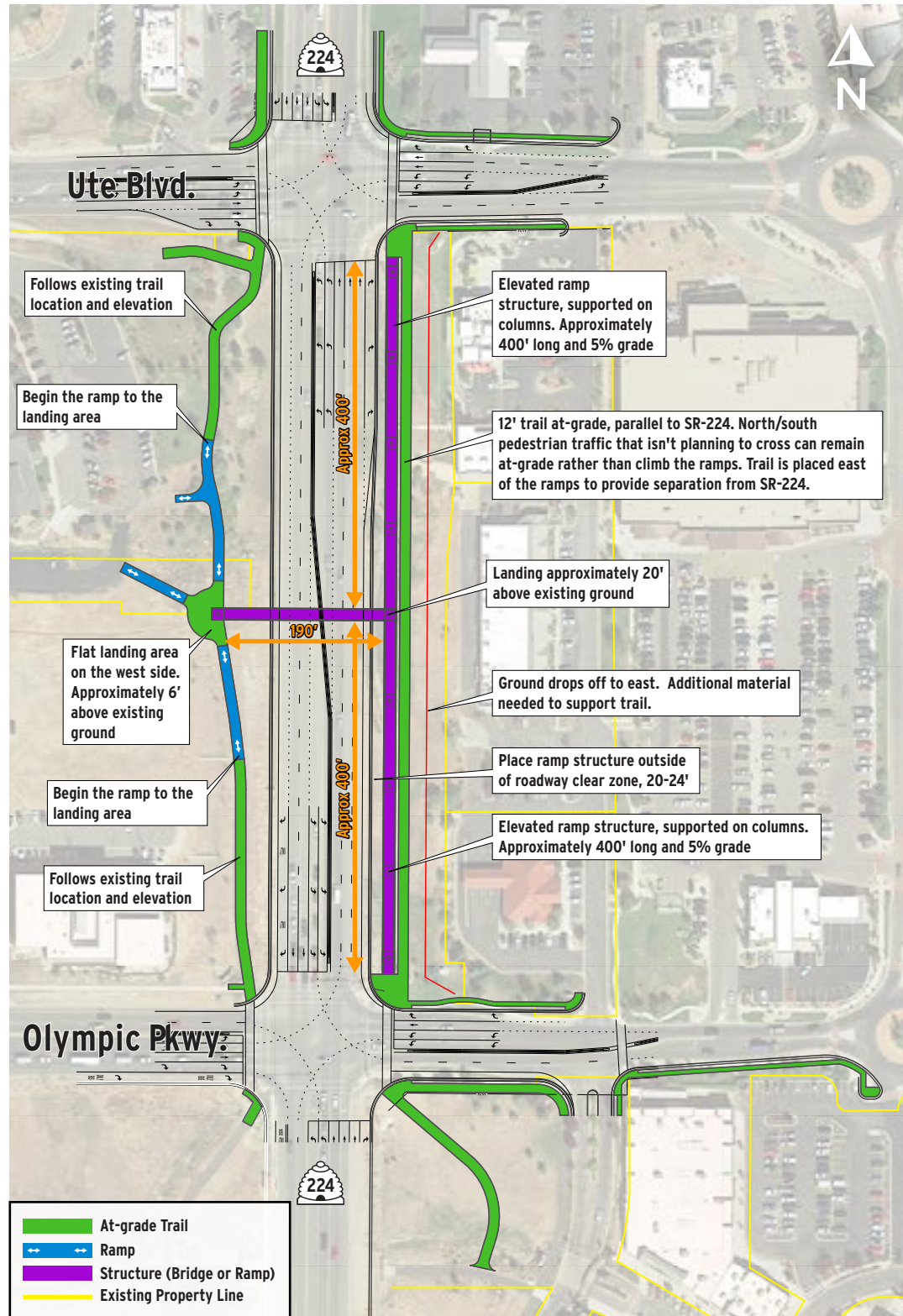
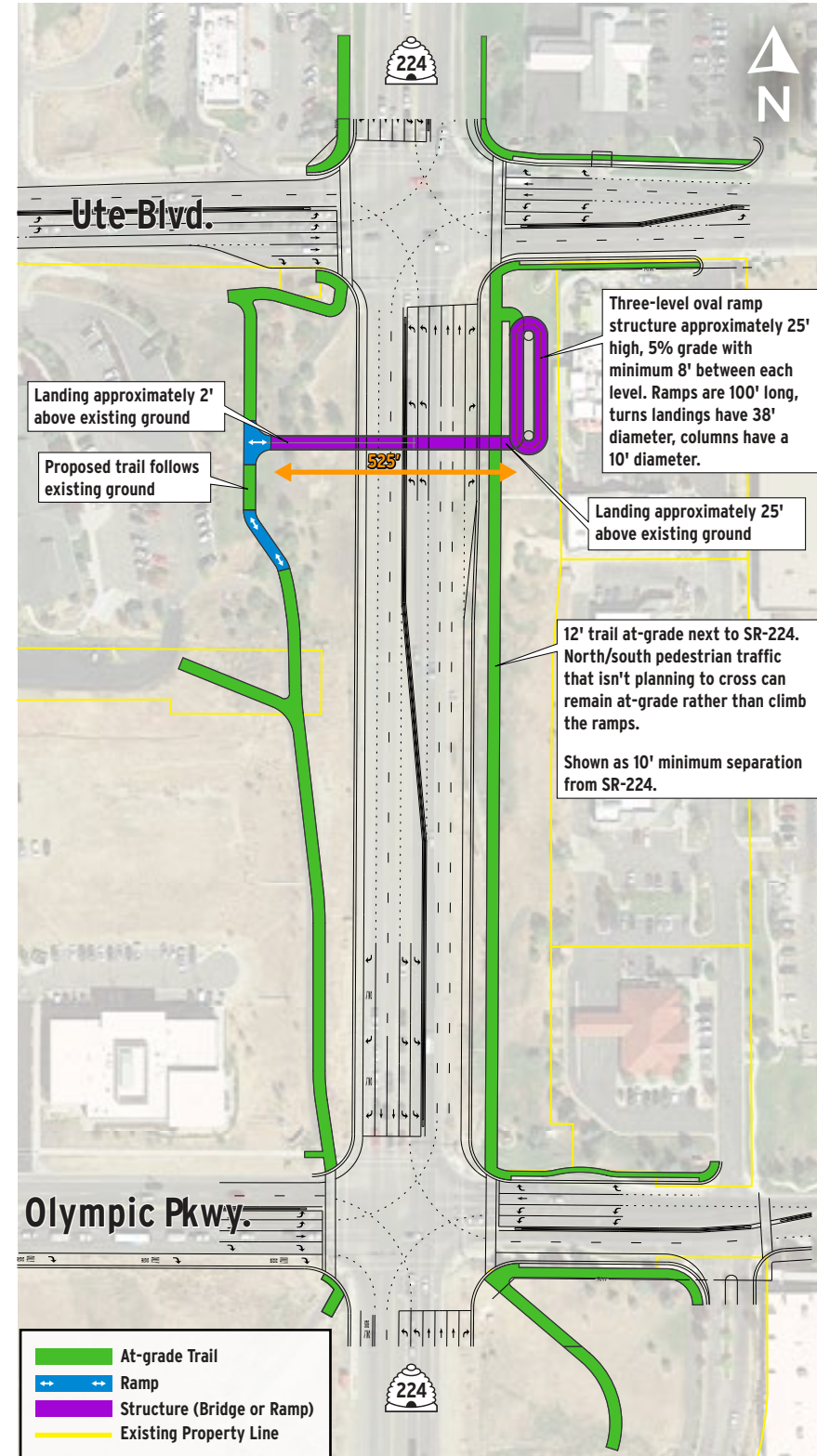


## PEDESTRIAN OVERPASS WITH STRAIGHT RAMPS



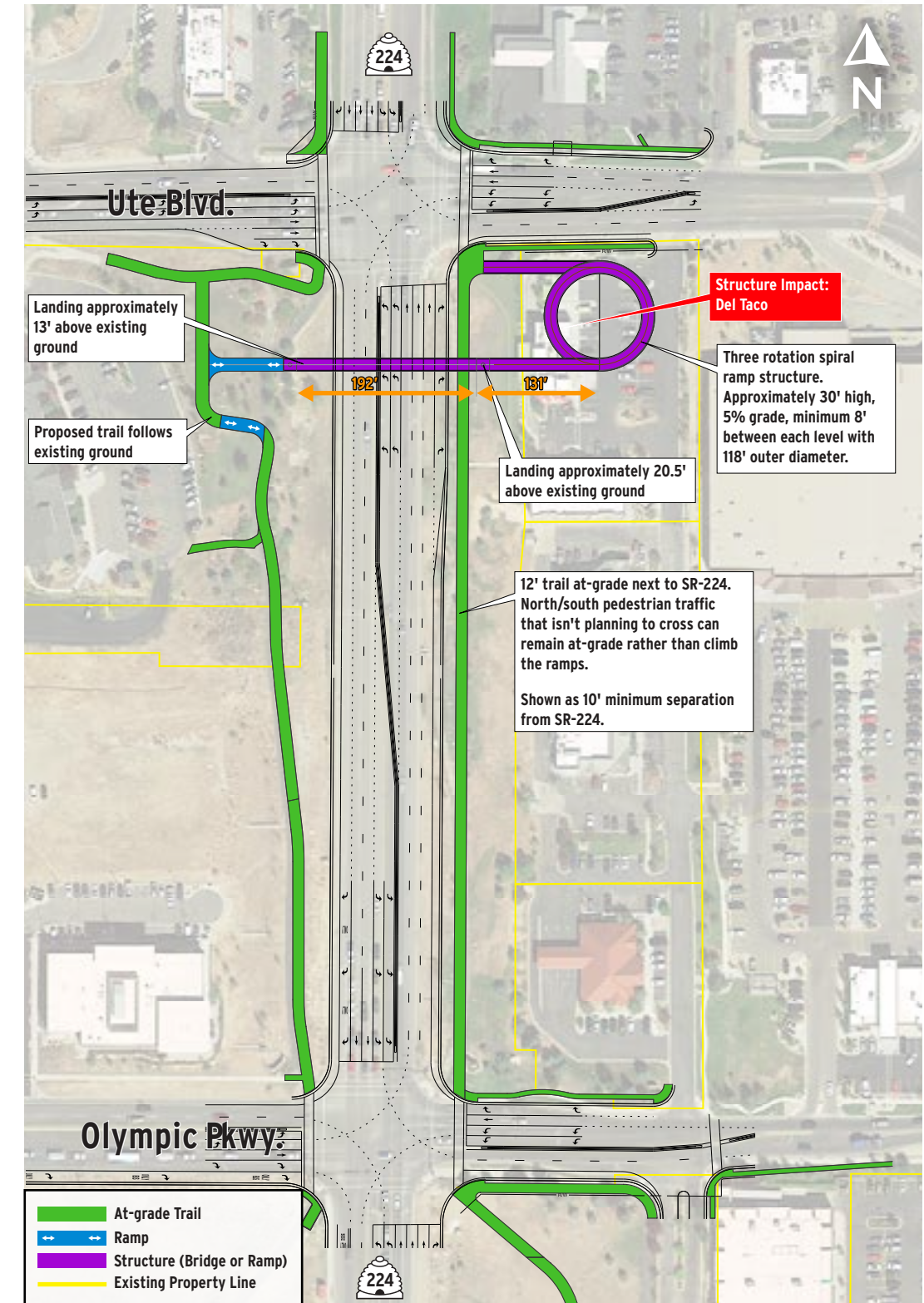
Alternative C is shown in black line work. Design is also compatible with Alternative A. Ramp structures are shown. Ramps could also be constructed as earthwork fill between retaining walls (solid) within the existing Right-of-Way

## PEDESTRIAN OVERPASS WITH OVAL RAMP



Alternative C is shown in black line work. Design is also compatible with Alternative A.

## PEDESTRIAN OVERPASS WITH SPIRAL



Alternative C is shown in black line work. Design is also compatible with Alternative A.

# ALTERNATIVE A AND C: PEDESTRIAN OVERPASS AND RAMP OPTIONS